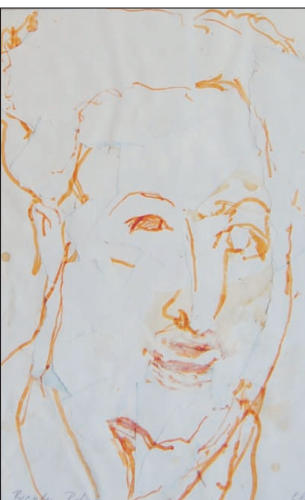


Authors show different face in Brooklyn

By Peter McDermott
pmcdermott@irishecho.com

James Joyce, Samuel Beckett and Brendan Behan are amongst the authors featured in an exhibition of work by the late Swedish artist and sculptor Carl Kohler showing at the Brooklyn Central Library, Grand Army Plaza, through April 4.

"Beyond the Words: Author Portraits" also features Jean Cocteau, Günter Grass, Franz Kafka, Henry Miller, Joyce Carol Oates, Virginia Woolf and others. In all, there are 26 large-scale portraits in oils and in ink.



Brendan Behan by Carl Kohler.

the subject's obsessions. He lends a visual 'voice' to these writers," she said.

"The Joyce, for example, depicts a progressively blind Joyce. The man is somber, sad, almost resigned," said Mulvihill, an occasional Irish Echo contributor.

Mulvihill said Kohler's rendering of Woolf is a "chilling portrayal for all that it says and does."

Overall, she added that she particularly liked the Joyce portraits, as well the Beckett and the Woolf. The latter two are probably the most expressionistic portraits in the show, she said.

The Beckett depicts "an absurdity which Beckett had honed to a level of high art, while the Woolf gives us turmoil and utter madness," she said.

Admission to the exhibition is free. Call the Brooklyn Central Library for details at 718-230-2100.



Samuel Beckett by Carl Kohler.

"During my father's career, he painted many special and unique author portraits that appeal to those interested in both art and literature," said the artist's son Henry Kohler.

He told the Echo that his father, who died in 2006 at age 86, needed to look up to the authors he portrayed. "The authors needed to capture his interest," he said.

Kohler said his father worked from photographic images and didn't know his famous subjects personally.

The Princeton Research Forum's Maureen Mulvihill said she's seen the "exciting" exhibition twice.

"Kohler doesn't merely give us a face — a recognizable face — he captures character and something of



FOR ALL YOUR FOOD SERVICE NEEDS SINCE 1971

John & Lisa Smith
(917) 620-8243
lsmith@driscollfoods.com

SERVING THE
CELTIC COMMUNITY

DAIRY • GROCERY • PRODUCE • FROZEN • PAPER

The Irish Echo
INDEX



The Irish Echo
Presents the

Premier Sponsor
KPMG

Index Top 30

Saluting companies with operations in the U.S. and Ireland.

Chief Honoree: Robert R. Douglass
Chairman, The Alliance for Downtown New York

India House, Wall Street,
12 noon-2 p.m.
Thursday, April 30th, 2009

NIBureau
Northern Ireland Bureau
Washington DC
www.nibureau.com

Tourism Ireland
Marketing the island of Ireland

Tickets and Partnership packages now available

Contact Mairéad Tully
at (212) 482-4818 Ext. 113
or email Mtully@irishecho.com



Contact Tim Daly
at (212) 482-4818 Ext. 130
or email Tdaly@irishecho.com

The Irish Echo Index is produced by and is a registered trademark of The Irish Echo. KPMG LLP's sponsorship of The Irish Echo Index Luncheon Event should not be construed as and is not intended to be a testimonial or endorsement of the Index, or any individual stocks or investments, nor is it intended to represent any claims, representation, guarantees or warranties in connection with any company's products and services.

Subscribe to the Irish Echo!
Call (212) 482-4818 ext. 123